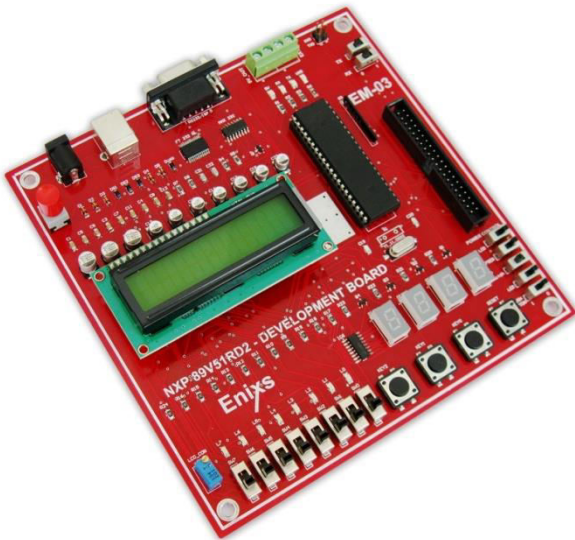


# 89V51RD2 DEVELOPMENT BOARD EM-03

## Introduction

The Embedded development board provides the stable and cost-effective platforms for building powerful embedded applications. It works on the two mode of operation (USB and Serial). It has the special features of onboard Input Output peripherals. It acts as target board for other interface boards also. It is used to learn and implement the 8051 projects in trouble free-way.



## Chip Specification

- Philips:8051 MicroController-P89V51RD2
- 64 KB of flash memory and 1024 byte of data RAM
- Three 16 bit Timers/Counters
- Programmable watch dog timer
- SPI and enhanced UART
- 12 clock(default) or 6 clock mode selection via software or ISP
- PCA with PWM and capture/compare functions
- Eight interrupt sources with four priority levels
- Four 8 bit I/O ports with three high current port 1 pin (16mA 000each)

## Board Specification

- Philips:P89V51RD2 controller
- Power up provisions :USB cable & 7.5 adaptor
- Operating voltage 5V
- Manual and Power on reset
- In system programming
- Power switch
- Reset switch
- Crystal frequency 11.0592 MHz
- Supportable to USB programming
- RS232 serial port for serial communication
- Universal standard 40 pin GPIO connector
- IO pins are connected to GPIO connector for external interface
- Eight slide switches
- Three push buttons
- Eight LEDs
- Four seven segment displays
- 16x2 character LCD module

## Compatible Interfaces

- ADC 0809 Interface card.
- DAC 0800 Interface card.
- DIO-IV Interface card.
- Elevator Interface card.
- I2C interface card.
- Model Train controller Interface card.
- Motor Interface card.
- Sensor Interface card.
- Traffic light Controller interface card.
- Wireless Interface Card.